

Zone

The Atelier Collection

As elements clash, surfaces crack, and organic forms emerge, we reflect upon the subtle and grand gestures that nature creates. Through layered fibers that protrude and recede, we explore the history of where the land and art meet and seek to bridge the worlds outside and within.

COLORWAY

Brook

CONSTRUCTION

Dobby Woven

MAX WIDTH WITHOUT SEAMS

11' 2"

SEAMING RECOMMENDATION

Custom Seam

STANDARD LEAD TIME

16 Weeks

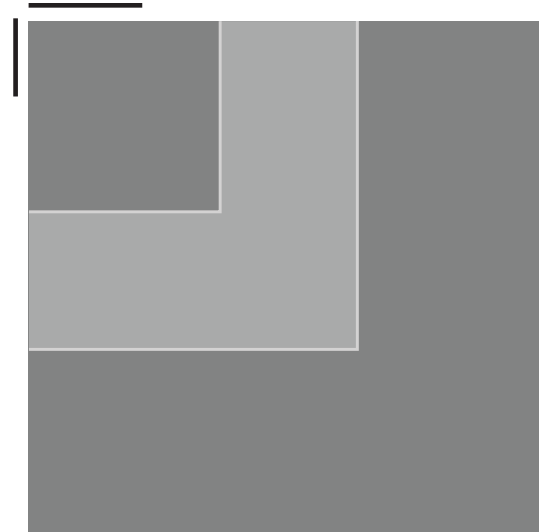
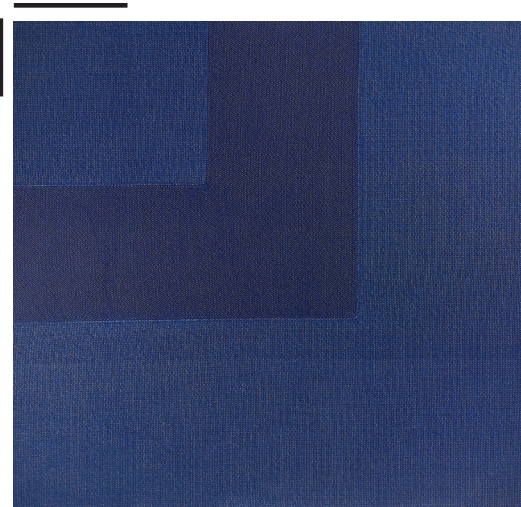
YARNS

38% Thin-Felted Wool
26% Linen
16% Silk Wool
16% Twisted Wool
5% Cotton










MADE IN USA

Fall River, Massachusetts

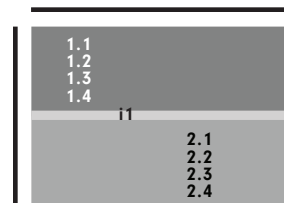
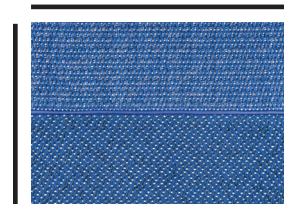
MERIDA



8' x 8' SHOWN

SILK WOOL & THIN-FELTED WOOL Brook & Brook		1.1
SILK WOOL & THIN-FELTED WOOL Brook & Brook		1.2
SILK WOOL & THIN-FELTED WOOL Brook & Brook		1.3
SILK WOOL & THIN-FELTED WOOL Brook & Brook		1.4
LINEN & TWISTED WOOL Brook & Brook		2.1
LINEN & TWISTED WOOL Brook & Brook		2.2
LINEN & TWISTED WOOL Brook & Brook		2.3
LINEN & TWISTED WOOL Brook & Brook		2.4
LEATHER PIPING Brook		i1

11" x 16" SECTION



*Take a
closer look.*

Scan for additional
images and to learn
more about this
collection.

