

# PORTFOLIO

DESIGNED FOR VERSATILITY. WOVEN TO ORDER.

## FLUX

Evoking cherry blossoms at sunrise in Kyoto, Flux uses a plied yarn of undyed wool and twisted wool above a linen and wool ground to create subtle shifts in texture that change in the light.

### CONSTRUCTION

Dobby Woven

### PATTERN REPEAT

5 1/2" w x 1/2" L

### STANDARD LEAD TIME

8 weeks

### FIBER CONTENT

31% Undyed Wool

28% Thin-Felted Wool

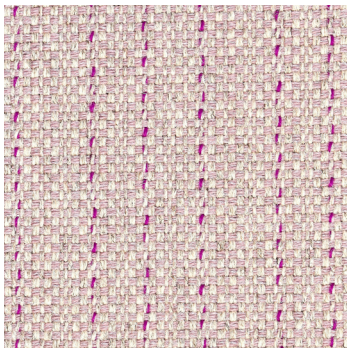
25% Linen

16% Twisted Wool

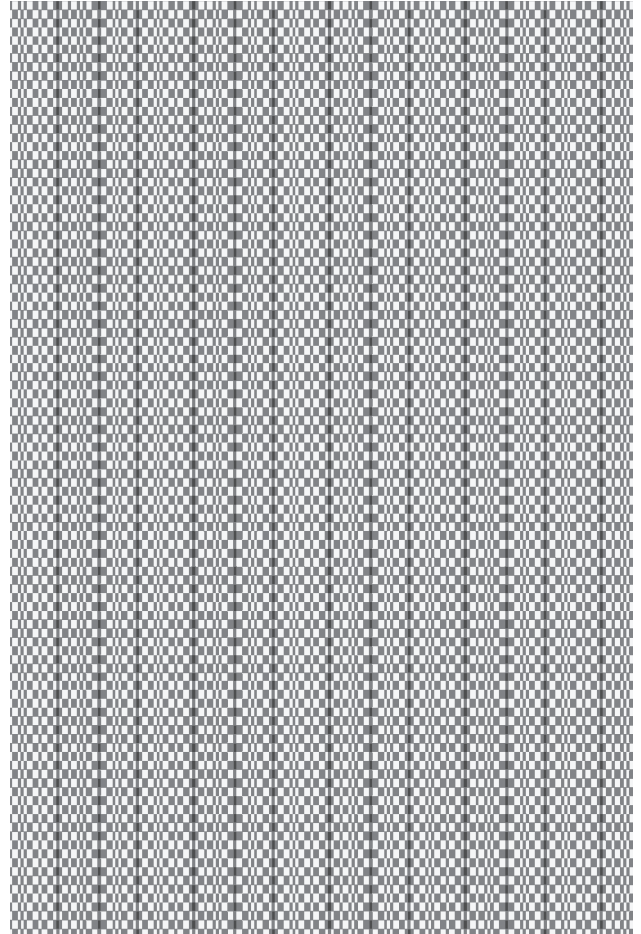
### BACKING

Cotton

### COLORWAYS



Hanami



2' X 3' SHOWN

Max width 11'10"



### AMERICAN MADE

100% woven and hand-finished by local craftsmen in Fall River, Massachusetts, the cradle of American textile manufacturing.



### TRAFFIC TESTED

Naturally durable, stain resistant, and third-party tested for durability in residential settings.



### NATURAL, ECO-FRIENDLY MATERIALS

Made with the highest quality natural fibers and environmentally smart materials. A zero-synthetic policy makes our rugs safe and healthy for your home.



### HAND DESIGNED

Our in-house design team and master weavers work hand-in-hand to create one-of-a-kind textiles of originality and beauty.



### SUSTAINABLE TO THE CORE

We harvest yarns only from rapidly replenishable natural sources, and live by a mantra of reuse, reduce, and recycle.



### WOVEN TO ORDER

Every Merida rug is tailored and finished to your project specifications, a choreography of hand and loom, artistry and ingenuity.

## MERIDA